

DEVICE A (here the most files were created) x DEVICE B (here the most files are cropped)

Display

Colour

Night light



[Night light settings](#)

Windows HD Colour

Get a brighter and more vibrant picture for videos, games and apps that support HDR.

[Windows HD Colour settings](#)

Scale and layout

Change the size of text, apps and other items

100% (Recommended)

[Advanced scaling settings](#)

Display resolution

1280 x 1024 (Recommended)

Display orientation

Landscape

Multiple displays

Older displays might not always connect automatically. Select Detect to try to connect to them.

Detect

[Advanced display settings](#)

[Graphics settings](#)

Obrazovka

Jas a barva

Změnit jas u integrované obrazovky



Night light



[Nastavení nočního osvětlení](#)

Windows HD Color

Získejte jasnější obraz s živějšími barvami pro videa, hry a aplikace, které podporují HDR.

[Nastavení Windows HD Color](#)

Měřítko a rozložení

Změnit velikost textu, aplikací a dalších položek

100%

[Upřesnit nastavení měřítka](#)

Rozšíření obrazovky

1280 x 1024

Orientace obrazovky

Na šířku

Více obrazovek

[Připojit k bezdrátové obrazovce](#)

Starší obrazovky se nemusí vždy připojovat automaticky. Vyberte možnost Rozpoznat, abyste se k nim zkusili připojit.

Rozpoznat

🏠 Advanced display settings

Choose display

Select a display to view or change the settings for it.

Display 1: DELL P190S

Display information



DELL P190S

Display 1: Connected to Intel(R) HD Graphics

Desktop resolution	1280 × 1024
Active signal resolution	1280 × 1024
Refresh rate (Hz)	60.020 Hz
Bit depth	8-bit
Colour format	RGB
Colour space	Standard dynamic range (SDR)

[Display adapter properties for Display 1](#)

Refresh Rate

Choose the refresh rate for your display. A higher rate provides smoother motion, but also uses more power.

Refresh rate

60.020 Hz

[Learn more](#)

🏠 Upřesňující nastavení obrazovky

Zvolit obrazovku

Pokud chcete zobrazit nebo změnit nastavení obrazovky, vyberte ji.

Obrazovka 1: Vestavěná obrazovka

Informace o obrazovce



Vestavěná obrazovka

Obrazovka 1 – připojena k: Intel(R) UHD Graphics

Rozlišení plochy	1280 × 1024
Rozlišení aktivního signálu	1920 × 1080
Obnovovací frekvence (Hz)	60.014 Hz
Bitová hloubka	6bitový
Formát barvy	RGB
Barevný prostor	Standardní dynamický rozsah (SDR)

[Zobrazit vlastnosti adaptéru pro obrazovku 1](#)

Obnovovací frekvence

Vyberte obnovovací frekvenci displeje. Vyšší frekvence zvyšuje plynulost pohybu, ale také spotřebu energie.

Obnovovací frekvence

60.014 Hz

[Další informace](#)

Advanced display settings

Choose display

Select a display

Display 1: DELL P

Display info

DELL P
Display

Desktop res

Active signal

Refresh rate

Bit depth

Colour form

Colour space

Display adap

Refresh Ra

Choose the re
smoother mot

Refresh rate

60.020 Hz

[Learn more](#)

Generic PnP Monitor and Intel(R) HD Graphics Properties

Intel(R) Graphics and Media Control Panel

Adapter Monitor Colour Management

Adapter Type

Intel(R) HD Graphics

Properties

Adapter Information

Chip Type: Intel(R) HD Graphics Family
DAC Type: Internal
Adapter String: Intel(R) HD Graphics 2000
Bios Information: Intel Video BIOS

Total Available Graphics Memory: 1760 MB
Dedicated Video Memory: 256 MB
System Video Memory: 0 MB
Shared System Memory: 1504 MB

List All Modes

OK Cancel Apply

Upřesňující nastavení obrazovky

Zvolit obrazovku

Pokud chcete zobrazit nebo změnit nastavení obrazovky, vyberte ji.

Obrazovka 1: Vestavěná c

Informace o obrazovce

Vestavěná obrazovka
Obrazovka 1 – připoj

Rozlišení plochy

Rozlišení aktivního signálu

Obnovovací frekvence (Hz)

Bitová hloubka

Formát barvy

Barevný prostor

[Zobrazit vlastnosti adaptéru](#)

Obnovovací frekvence

Vyberte obnovovací frekvenci, která poskytuje plynulejší pohyby, ale také spotřebu energie.

Obnovovací frekvence

60.014 Hz

[Další informace](#)

Generic PnP Monitor and Intel(R) UHD Graphics Properties

Intel(R) Graphics and Media Control Panel

Adapter Monitor Colour Management

Adapter Type

Intel(R) UHD Graphics

Properties

Adapter Information

Chip Type: Intel(R) UHD Graphics Family
DAC Type: Internal
Adapter String: Intel(R) UHD Graphics
Bios Information: Intel Video BIOS

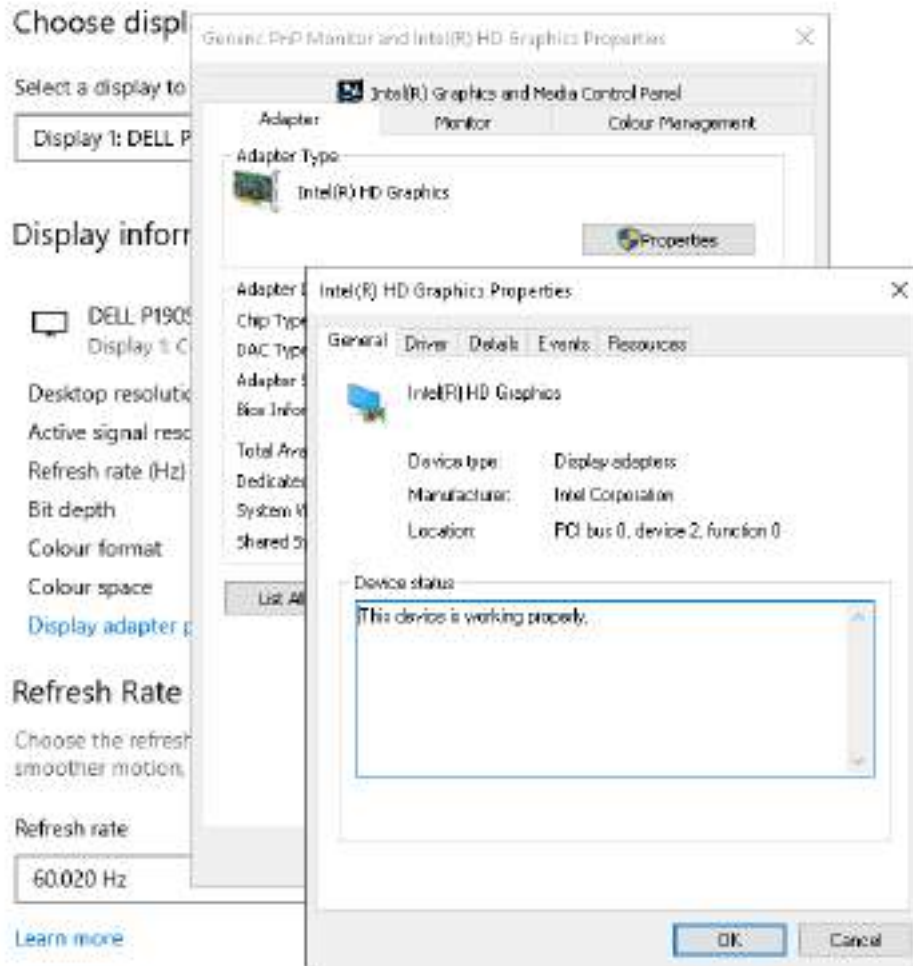
Total Available Graphics Memory: 4107 MB
Dedicated Video Memory: 128 MB
System Video Memory: 0 MB
Shared System Memory: 3979 MB

List All Modes

OK Cancel Apply

DISPLAY ADAPTER PROPERTIES FOR DISPLAY 1 - ADAPTER - PROPERTIES - GENERAL

Advanced display settings



blocked by my network administrator on the second device -I can ask him to change it if you need this information

DISPLAY ADAPTER PROPERTIES FOR DISPLAY 1 - ADAPTER - PROPERTIES - DRIVER

Advanced display settings

Choose display

Select a display to view

Display 1: DELL P190S

Display information

DELL P190S
Display 1: Connected

Desktop resolution

Active signal resolution

Refresh rate (Hz)

Bit depth

Colour format

Colour space

[Display adapter properties](#)

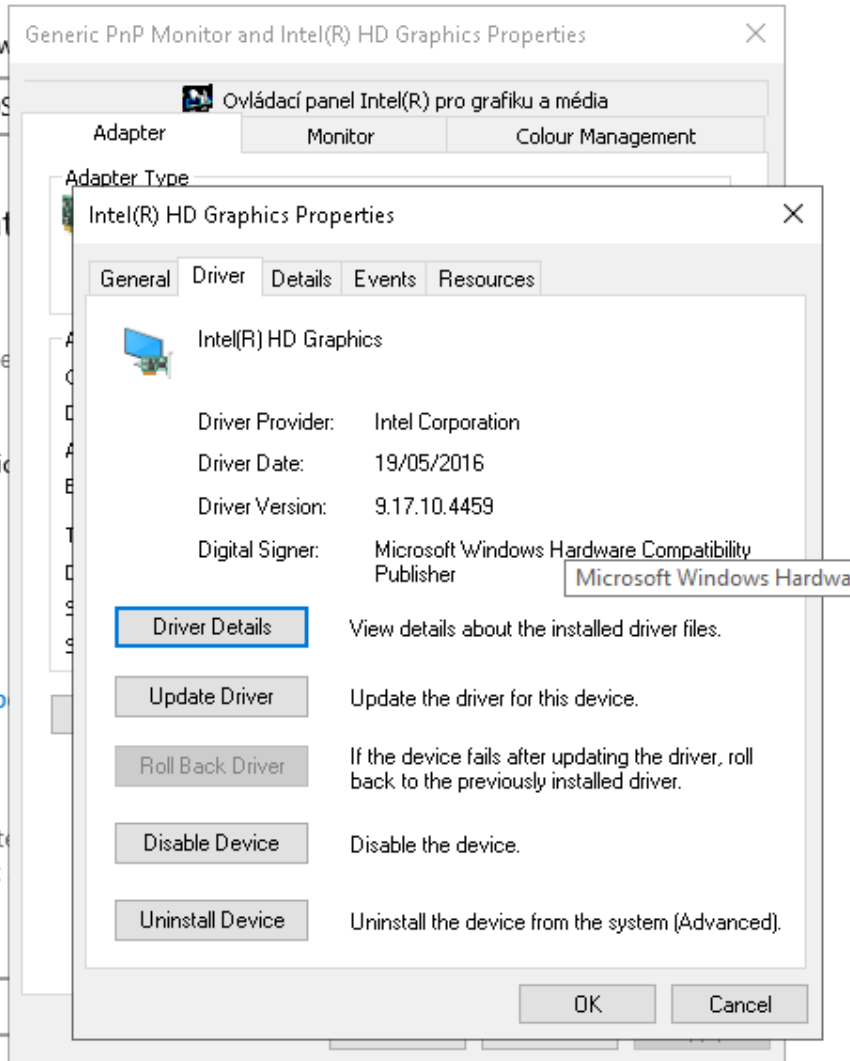
Refresh Rate

Choose the refresh rate for smoother motion, but

Refresh rate

60.020 Hz

[Learn more](#)



blocked by my network administrator on the second device -I can ask him to change it if you need this information

MONITOR

Choose display

Select a display to view or change the settings for it.

Display 1: DELL P1905

Display information

DELL P1905
Display 1: Connected to Intel(R) HD Graphics

Desktop resolution 1280 x 800
Active signal resolution 1280 x 800
Refresh rate (Hz) 60.020
Bit depth 8-bit
Colour format RGB
Colour space Standard

[Display adapter properties for Display 1](#)

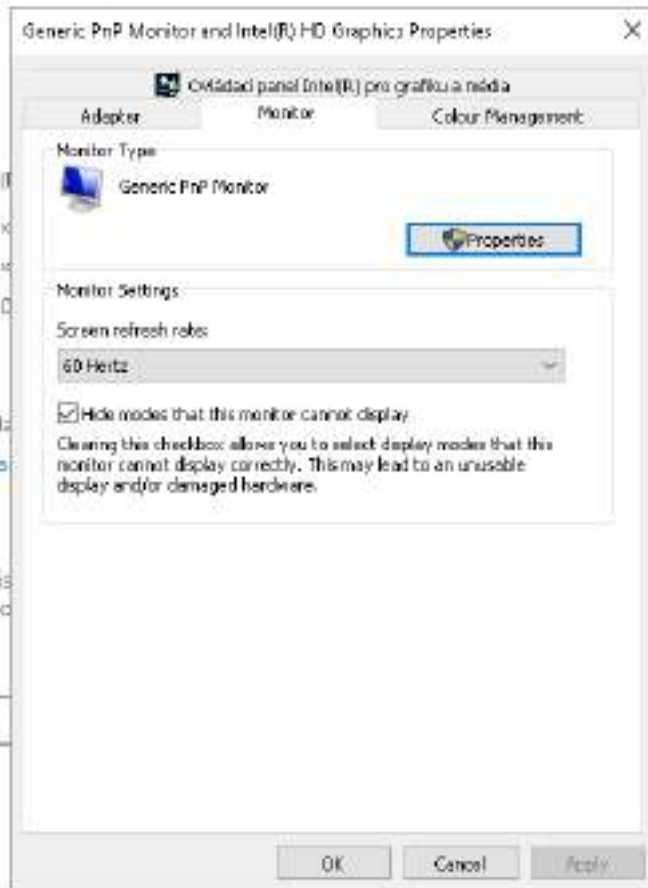
Refresh Rate

Choose the refresh rate for your display to get smoother motion, but also uses more power.

Refresh rate

60.020 Hz

[Learn more](#)



Upřesňující nastavení obrazovky

Zvolit obrazovku

Pokud chcete

Obrazovka 1

Informace

Vestavní obrazovka

Rozlišení plochy

Rozlišení aktivity

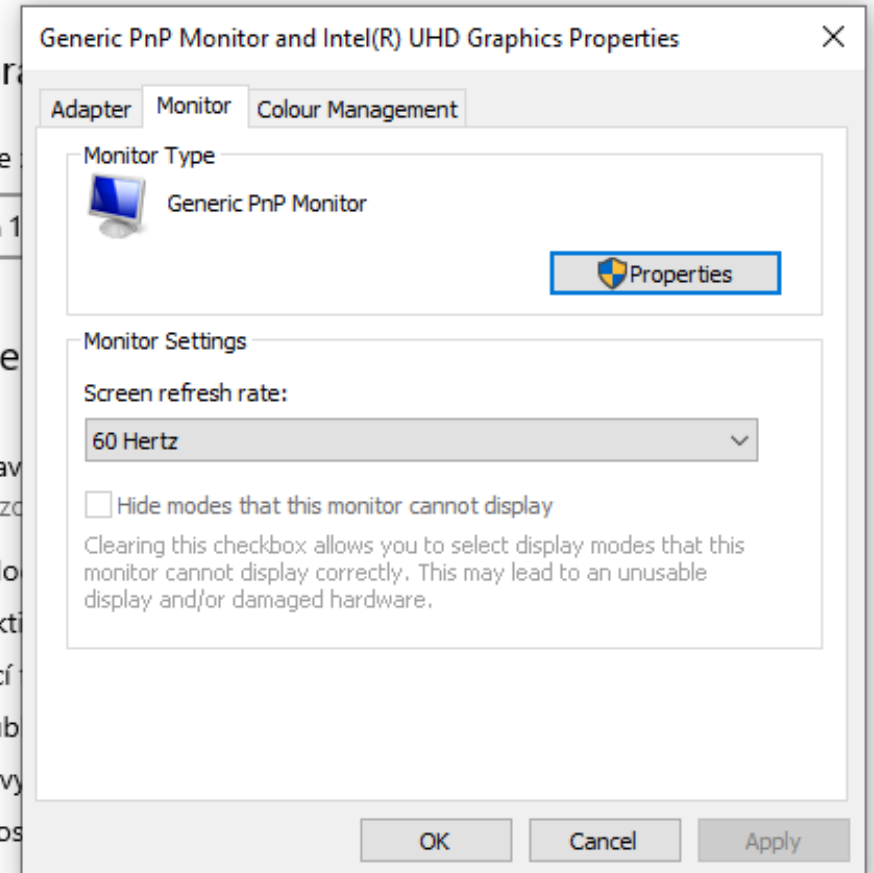
Obnovovací frekvence

Bitová hloubka

Formát barvy

Barevný prostor

[Zobrazit vlastnosti adaptéru pro obrazovku 1](#)



MONITOR - PROPERTIES - GENERAL

🏠 Advanced display settings

Choose display

Select a display to

Display 1: DELL P

Display inform

DELL P1905
Display 1: C

Desktop resoluti

Active signal reso

Refresh rate (Hz)

Bit depth

Colour format

Colour space

Display adapter p

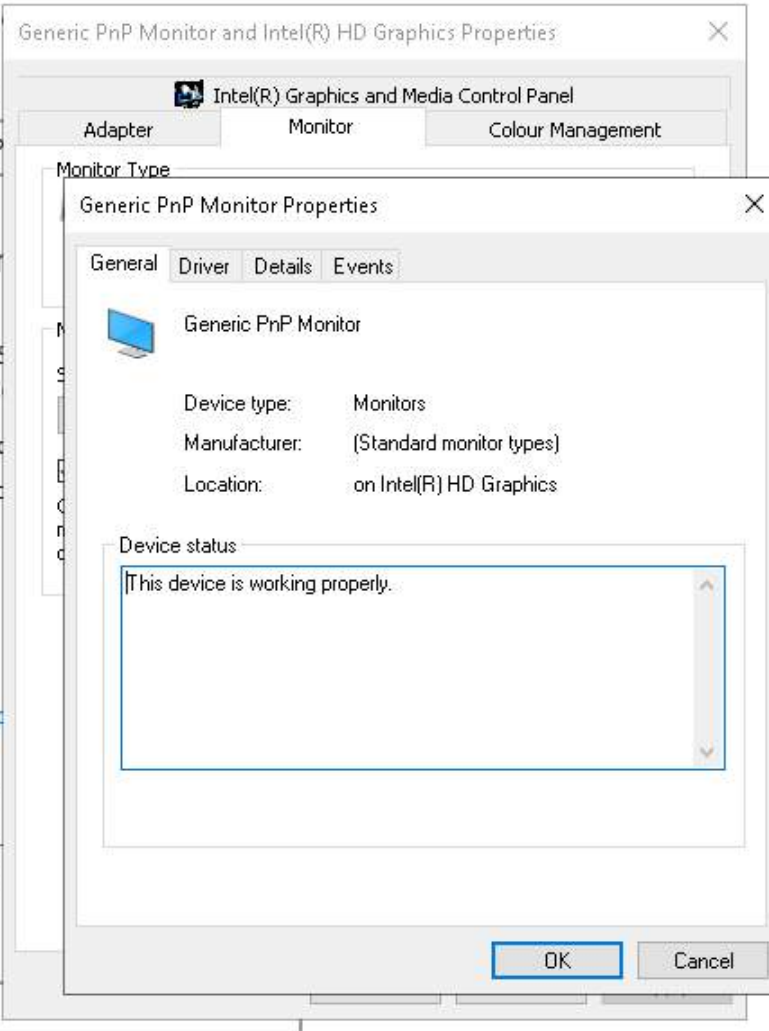
Refresh Rate

Choose the refresh
smoother motion,

Refresh rate

60.020 Hz

[Learn more](#)



*blocked by my network
administrator on the second device
-I can ask him to change it if you
need this information*

MONITOR - PROPERTIES - DRIVER

← Settings

Advanced display settings

Choose display

Select a display to view

Display 1: DELL P190S

Display information

DELL P190S
Display 1: Connected

Desktop resolution

Active signal resolution

Refresh rate (Hz)

Bit depth

Colour format

Colour space

[Display adapter properties](#)

Refresh Rate

Choose the refresh rate for smoother motion, but

Refresh rate

60.020 Hz

[Learn more](#)

Generic PnP Monitor and Intel(R) HD Graphics Properties

Ovládací panel Intel(R) pro grafiku a média

Adapter Monitor Colour Management

Monitor Type

Generic PnP Monitor Properties

General Driver Details Events

Generic PnP Monitor

Driver Provider: Microsoft

Driver Date: 21/06/2006

Driver Version: 10.0.19041.4355

Digital Signer: Microsoft Windows

Driver Details View details about the installed driver files.

Update Driver Update the driver for this device.

Roll Back Driver If the device fails after updating the driver, roll back to the previously installed driver.

Disable Device Disable the device.

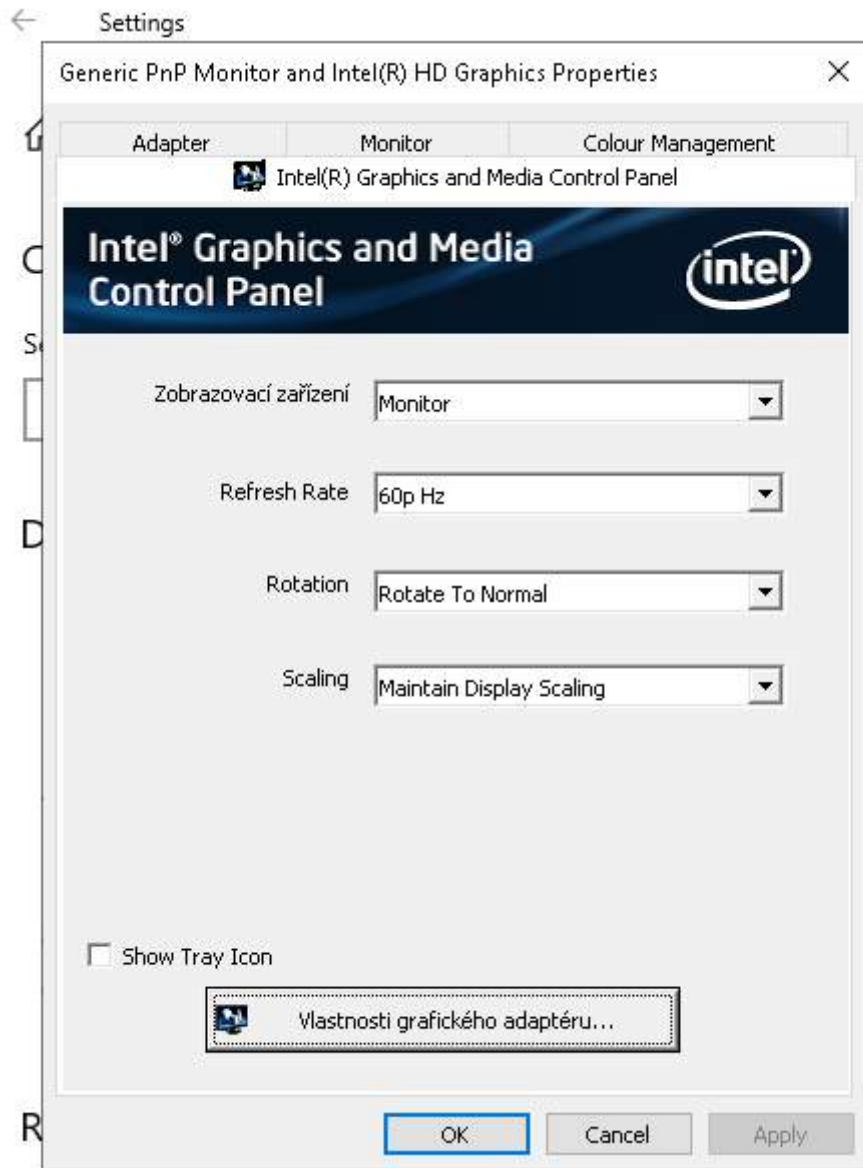
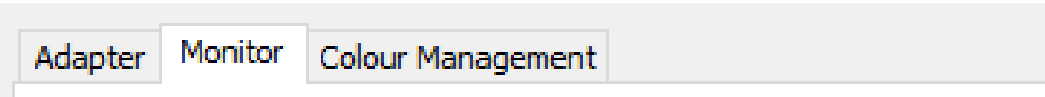
Uninstall Device Uninstall the device from the system (Advanced).

OK Cancel

INTEL GRAPHICS AND MEDIA CONTROL PROPERTIES

not accessible on the second device

Generic PnP Monitor and Intel(R) UHD Graphics Properties





Intel® Graphics and Media Control Panel

Advanced Mode

Display



General Settings

Multiple Displays

Color Enhancement

Custom Resolutions

Monitor / TV Settings

3D



Media



Options and Support



Display Profiles

Current Settings

Save

Options

Display

Monitor DELL P190S

Resolution

1280 x 1024

Color Depth

32 Bit

Refresh Rate

60p Hz

Rotation

Rotate To Normal

Scaling

Maintain Display Scaling



OK

Cancel

Apply



Intel®
Graphics and Media
Control Panel

Advanced Mode ▾

Display



General Settings

Multiple Displays ▶▶

Color Enhancement

Custom Resolutions

Monitor / TV Settings

3D



Media



Options and Support



Display Profiles

Current Settings ▾

Save

Options ▾

Operating Mode

Single Display ▾

Primary Display

Monitor DELL P190S ▾



OK

Cancel

Apply



Intel® Graphics and Media Control Panel

Advanced Mode

Display



General Settings

Multiple Displays

Color Enhancement

Custom Resolutions

Monitor / TV Settings

3D



Media



Options and Support



Display Profiles

Current Settings

Save

Options

Display

Monitor DELL P190S

Preview

Restore Defaults

Color

All Colors

Brightness	<input type="range"/>	0
Contrast	<input type="range"/>	50
Gamma	<input type="range"/>	1.0
Hue	<input type="range"/>	0
Saturation	<input type="range"/>	0



OK

Cancel

Apply





Intel® Graphics and Media Control Panel

Advanced Mode

Display



General Settings

Multiple Displays

Color Enhancement

Custom Resolutions

Monitor / TV Settings

3D



Media



Options and Support



Display

Monitor DELL P190S

Settings

Brightness	<input type="range"/>	75
Contrast	<input type="range"/>	50

Video Gain

Red	<input type="range"/>	100
Green	<input type="range"/>	100
Blue	<input type="range"/>	100

Video Black Level

Red	<input type="range"/>	128
Green	<input type="range"/>	128
Blue	<input type="range"/>	128



OK

Cancel

Apply

COLOUR MANAGEMENT

Advanced display settings

Choose

Select a display

Display

Display

Desktop

Active size

Refresh rate

Bit depth

Colour format

Colour calibration

Display calibration

Refresh

Choose the smoother

Refresh rate

Generic PnP Monitor and Intel(R) HD Graphics Properties

Colour Management

Devices: All Profiles: Advanced

Device: Display 1: Generic PnP Monitor - Intel(R) HD Graphics

Use my settings for this device

Identify monitor

Profiles associated with this device:

Name	File name
------	-----------

Add... Remove Set as Default Profile

[Understanding colour management settings](#) Profile

Close

Monitor: Colour Management

Colour Management

Devices: All Profiles: Advanced

Device: Display 1: Obecný monitor PnP - Intel(R) UHD Graphics

Use my settings for this device

Identify monitor

Profiles associated with this device:

Name	File name
------	-----------

Add... Remove Set as Default Profile

[Understanding colour management settings](#) Profile

Close

Advanced display settings

Choose display

Select a display

Display 1: DELL P

Display info

DELL P
Display

Desktop res

Active signal

Refresh rate

Bit depth

Colour format

Colour space

Display adap

Refresh rate

Choose the refresh rate smoother motion

Refresh rate

60.020 Hz

Learn more

Colour Management

Devices | All Profiles | **Advanced**

The following profiles are installed on your system:

Name	File name	Class
WCS Device Profiles		
sRGB virtual device model profile	wsRGB.cdmp	
scRGB virtual device model profile	wscRGB.cdmp	
WCS Viewing Conditions Profiles		
WCS profile for sRGB viewing conditions	D65.camp	
WCS profile for ICC viewing conditions	D50.camp	
WCS Gamut Mapping Profiles		
Proofing and line art	Proofing.gmmp	

Description:
Created:
Colour Space:
Device Model:
PCS:
CMM:
Version:

Add... Remove

OK Cancel Apply

Colour Management

Devices | **All Profiles** | Advanced

The following profiles are installed on your system:

Name	File name	Class
WCS Device Profiles		
sRGB virtual device model profile	wsRGB.cdmp	
scRGB virtual device model profile	wscRGB.cdmp	
WCS Viewing Conditions Profiles		
WCS profile for sRGB viewing conditions	D65.camp	
WCS profile for ICC viewing conditions	D50.camp	
WCS Gamut Mapping Profiles		
Proofing and line art	Proofing.gmmp	

Description:
Created:
Colour Space:
Device Model:
PCS:
CMM:
Version:

Add... Remove

Close

